



**CATTLEMAN'S CONNECTION  
ANGUS SALE**

**Tuesday, 1:00 p.m. (MDT)**

**MARCH 10, 2020**

**At the Ranch, Yuma, CO**

**3 1/2 Miles South of Yuma on Hwy. 59**

What is it about feeding cattle that works even in tough market conditions? There are things feeders will look for and pay extra to get. What are those things? Buyers for feeders look for calves that will grow and gain. That means calves that have the ability to use the least amount of feed and convert that into maximum gain. Additionally, those calves once fed have to grade and yield.

That's where we differ from some ranches selling bulls. We also feed out groups of calves and that makes a big difference in saying some bull's calves should work, versus being able to say we know how they will work. We've also culled over the years some fine looking bloodlines after finding out they just didn't perform.

A feeding trial is one of the ways we test different herd sires. Year after year we enter a group in the Yuma County Cattlemen's Calcutta Feeding Contest, and pit them against the best the area has. We've won the overall title several times, which is a combination of carcass and average daily gain. We've also won the carcass side several times, based upon which carcass produced the most dollars and that's pretty real world. Nothing fancy about that. Last year out of the entire group which were entered, 16 head made CAB and 8 were WWR entries, 3 were Prime and the rest graded Choice. Out of the top 15 rankings for carcass, 5 were WWR entries; we had the number one carcass and number four carcass overall. That will bring the buyers to the ring when it's time to sell your calves. Not only that, it's consistency. We have a breeding program and it's based on results. Our results are measured in a paycheck, not numbers projected on paper.

We at the Wagon Wheel Ranch have been at this business of selling bulls longer than many. In fact this year marks the 70th year we've sold Angus bulls. Francis and Mary first sold bulls at the NWSS in Denver starting in 1950, and every year since we've carried on. That's how you develop a consistent breeding program. Year after year, and measure the final outcome by following calves through to see that it's working.

There's no "white paper" bulls here. They either work or they don't. While we do use EPD's as a very good indicator of performance, we still verify. We think that is what separates us from many others, in that just because a bull looks good on paper - if we see something we don't like or he's off structurally or any other flaw, we will and do use the knife.

We have what we consider bulls in their working clothes. Nothing fancy, just bulls that work for you. If you are looking for bulls which flat get out and get the job done, from A to Z, we've got what you are looking for. It will be our pleasure to have you at our sale and look forward to doing business with you.

*Kenny Rogers*

Kenny Rogers and the entire  
Wagon Wheel Ranch crew





*Registered Angus  
Since 1950  
Visitors Welcome!*

## CATTLEMAN'S CONNECTION ANGUS SALE

Sale Day Phones  
970/848-0676 or 970/630-0600

Tuesday - 1 p.m. (MDT)  
**March 10, 2020**

**SALE LOCATION:** Wagon Wheel Ranch, 34346 Hwy. 59, Yuma, Colorado. 3 1/2 miles south of Yuma on Hwy. 59.

**MOTELS:**

Harvest Motel, Yuma, CO.....970/848-5853  
Sunrise Inn, Yuma, CO.....970/848-5465  
Nelson Inn, Yuma, CO.....970/848-2774

**TRANSPORTATION:**

Yuma Municipal Airport is 1/2 mile south of Yuma, CO.

**INSPECTION OF CATTLE:**

Cattle can be viewed at the Ranch anytime prior to the sale. Call for an appointment.

**TERMS & CONDITIONS:**

Cash. Please settle for cattle promptly. All cattle sell according to the Terms and Conditions of the American Angus Association.

**RETAINED INTEREST:**

Wagon Wheel Ranch will retain 1/2 semen revenue sharing interest in all of the bulls in this sale. The buyer has full possession and salvage value of the bull.

**HEALTH:**

Interstate health papers and brand release papers will be provided on all cattle selling. All bulls sell fertility tested and with scrotal measurements. Heifers are bangs vaccinated.

**TRUCKING:**

We will deliver on total purchases of \$2000 or more to central locations within 250 miles. We will also be glad to assist in making the best possible trucking arrangements.

**INSURANCE:**

Will be available sale day. At this time the First Breeding Season Loss of Use insurance has been discontinued by the insurance company. We have arranged for American Livestock Insurance Co./Harding and Harding to make available traditional full mortality coverage which provides coverage for death from natural causes. This coverage will be available SALE DAY for those who choose to insure their purchases. All claims will require a veterinarian's exam and immediate notification to the insurance company. A representative from the insurance company will be available on sale day to answer any questions you may have.

**LIABILITY:**

All persons attending this sale do so at their own risk, legal or otherwise, for their safety or the behavior of the animals. The Owners, Auction Service and the Sale Staff assume no liability for property loss or accidents that may occur.

Cattleman's Connection

**AUCTIONEER:** Dustin Carter 712/898-9972  
Vermillion, SD  
dustinkcarter@gmail.com

**LIVESTOCK PRESS REPRESENTATIVES:**

Jim Gies, Western Livestock Journal .....970/454-3836  
Randy Rasby, Livestock Plus .....308/539-6195  
Alan Sears, Western Ag Reporter .....970/454-3986

Buyers unable to attend may send their bids to the auctioneer, press representatives or the Rogers family.

For call in bids, contact Darrell Smith at 970/630-2370.

**LUNCH:**

Join us for a complimentary lunch at the ranch sale day.

**ANNOUNCEMENTS:**

Made from the block will take precedence over this printed catalog.

**EPDs:**

EPDs printed in this catalog were current Feb. 12, 2020.

**Stars:**

You will notice some bulls have a star rating of 1 to 3 stars above their lot number. That ranking is a calving ease score based on the individual's CED EPD, actual birth weight and BW EPD. A 3 star rating is a top calving ease herd bull prospect. Be sure to choose bulls based on your herd requirements.



Kenny and Jody Rogers ..... 970/848-3759  
Jerrod and Hollie Massey ..... 970/630-7518  
Mary Rogers  
Fax..... 970/848-5450  
Kenny's Cell..... 970/630-0600

www.wagonwheel-ranch.com

email: jody@wagonwheel-ranch.com

**Please bring this catalog with you sale day!**

Wagon Wheel Ranch

# Reference Sires



## Thomas Top Hand 0536

Reg. #: 16860273

EPDs

CE	BW	WW	YW	Milk	CW	MB	RE	Fat
+10	-0.5	+68	+120	+23	+54	+0.74	+0.57	+0.036
<b>\$W</b> +68		<b>\$F</b> +123	<b>\$G</b> +54		<b>\$B</b> +177			

Sire: SAV Bismarck 5682

MGS: Mytty In Focus

- ◆ Notable due to his ability to spread birth and growth like few can
- ◆ Sires larger framed, easily born calves that excel for growth
- ◆ Offers big time benefits with his high rankings for both \$W and \$B

Sire of Lots 12 - 23



## Mill Bar Hickok 7242

Reg. #: 17351674

EPDs

CE	BW	WW	YW	Milk	CW	MB	RE	Fat
+14	-0.1	+66	+112	+25	+39	+58	+74	-0.007
<b>\$W</b> +72		<b>\$F</b> +75	<b>\$G</b> +52		<b>\$B</b> +128			

Sire: Connealy Consensus 7229

MGS: SAV Final Answer 0035

- ◆ High customer satisfaction bull that ranks #1 for ABS sales in 2018
- ◆ Well rounded, maternally oriented bull with super phenotype and calving ease
- ◆ Progeny offer consistent, well balanced type and kind with extra depth of rib, muscle and great dispositions

Sire of Lots 42 - 46



## Connealy Comrade 1385

Reg. #: 17031465

CE	BW	WW	YW	Milk	CW	MB	RE	Fat
+17	-3.5	+46	+90	+28	+21	+60	+65	+0.003
<b>\$W</b> +70.67		<b>\$F</b> +53.09	<b>\$G</b> +40.74		<b>\$B</b> +96.57			

Sire: Connealy Consensus 7229

MGS: GAR New Design 5050

- ◆ Superior settler, proven calving ease, high docility, super daughters
- ◆ He provides added benefits where carcass merit is valued
- ◆ The docility is legit, if you want a gentle one - look at the Comrade sire group

Sire of Lots 49 - 50

# Reference Sires

## KCF Bennett Fortress

Reg. #: 17259012

EPDs

CE	BW	WW	YW	Milk	CW	MB	RE	Fat
+9	+0.3	+77	+138	+24	+48	+0.65	+0.76	-0.042
<b>\$W</b>	+90	<b>\$F</b>	+91	<b>\$G</b>	+61	<b>\$B</b>	+152	

Sire: Connealy Consensus

MGS: SS Objective T510 OT26

- ◆ One of the most highly proven spread bulls in the breed. His calves come easy, have great vigor and grow exceptionally well.
- ◆ A \$ Weaning trait leader who breeds profit into cattle at all stages of their life.
- ◆ His first daughters in production are deep-bodied, broody females with nice udder design. His sons are high-volume, easy fleshing and fast gaining.

Sire of Lots 1 - 11



## Werner Flat Top

Reg. #: 18094501

EPDs

CE	BW	WW	YW	Milk	CW	MB	RE	Fat
+15	-2.1	+53	+117	+36	+22	+0.57	+0.48	-0.003
<b>\$W</b>	+63	<b>\$F</b>	+79	<b>\$G</b>	+49	<b>\$B</b>	+128	

Sire: Connealy Black Granite

MGS: CRA Bexton 872 5205 608

- ◆ A dependable calving ease sire, delivering exceptional growth and phenotype.
- ◆ Black Granite's stoutest and best phenotype son.
- ◆ Excellent mating choice to reduce BW without sacrificing growth.

Sire of Lots 24 - 27



## GAR Sure Fire

Reg. #: 17328461

EPDs

CE	BW	WW	YW	Milk	CW	MB	RE	Fat
+14	-0.3	+57	+107	+32	+48	+1.33	+0.69	+0.042
<b>\$W</b>	+80	<b>\$F</b>	+97	<b>\$G</b>	+85	<b>\$B</b>	+182	

Sire: Connealy In Sure 8524

MGS: GAR New Design 5050

- ◆ Sure Fire is the go-to calving ease sire in commercial and seed-stock programs everywhere.
- ◆ His daughters are proving to be a real asset to cow herds.
- ◆ Offers real carcass proof. Among bulls born in the past decade, only one records more actual carcass records than Sure Fire

Sire of Lots 31 - 35





WWR Fortress G1



WWR Fortress G3

**LOT 1 WWR Fortress G1**

Calved: 1/24/2019 Tattoo: G1 Reg. #: 19520237

#CONNEALY CONSENSUS  
**K C F BENNETT FORTRESS**  
 THOMAS PATRICIA 9705

#KMK ALLIANCE 6595 I87  
 BLINDA OF CONANGA 004  
 #S S OBJECTIVE T510 0T26  
 THOMAS PATRICIA 71138

THOMAS TOP HAND 0536  
**WWR MS TOP HAND 7E2J**  
 #WWR MS TOTAL CREST 5C1J

#SAV BISMARCK 5682  
 THOMAS RUBY ERICA 8293  
 SUMMITCREST ABERDEEN 00Y7  
 WWR MS STOCK ANALYST W9J2

EPDs					Performance			
CED	BW	WW	YW	Milk	Act. BW	Adj. WW	WWRatio	
+4	+2.6	+86	+149	+27	78	868	123	
MARB	RE	Fat	%IMF	RE	BF	SC		
+0.68	+0.89	-0.017	5.40	16.4	0.28	34.0		
<b>\$W</b> +80	<b>\$F</b> +120	<b>\$G</b> +62	<b>\$B</b> +182					

◆ Can't ask a bull to do much more. Heaviest Adj Weaning Weight, second largest REA, above average %IMF, WW top 1%, YW top 1%, \$F top 2%, \$B top 3%, \$W top 5%, REA top 10%, Marb top 30%.

**★★ LOT 3 WWR Fortress G3**

Calved: 1/24/2019 Tattoo: G3 Reg. #: 19520214

#CONNEALY CONSENSUS  
**K C F BENNETT FORTRESS**  
 THOMAS PATRICIA 9705

#KMK ALLIANCE 6595 I87  
 BLINDA OF CONANGA 004  
 #S S OBJECTIVE T510 0T26  
 THOMAS PATRICIA 71138

#HOOVER DAM  
**WWR HOOVER DAM 7E51**  
 WWR MS BEEF BAROMETER 3A36

#SYDGEN C C & 7  
 #ERICA OF ELLSTON C124  
 R B BAROMETER 9721  
 WWR MS NEW DAY RISING 1Y41

EPDs					Performance			
CED	BW	WW	YW	Milk	Act. BW	Adj. WW	WWRatio	
+10	-0.6	+64	+115	+25	54	752	107	
MARB	RE	Fat	%IMF	RE	BF	SC		
+0.66	+0.73	-0.012	5.11	15.3	0.28	30.5		
<b>\$W</b> +64	<b>\$F</b> +89	<b>\$G</b> +58	<b>\$B</b> +147					

◆ Recommended for use on heifers. Born small grew fast, solid numbers across the board.

**★★ LOT 2 WWR Fortress G2**

Calved: 2/3/2019 Tattoo: G2 Reg. #: 19520231

#CONNEALY CONSENSUS  
**K C F BENNETT FORTRESS**  
 THOMAS PATRICIA 9705

#KMK ALLIANCE 6595 I87  
 BLINDA OF CONANGA 004  
 #S S OBJECTIVE T510 0T26  
 THOMAS PATRICIA 71138

SUMMITCREST ABERDEEN 00Y7  
**WWR MS TOP HAND 7E2J**  
 WWR MS STOCK ANALYST W9J2

#TC ABERDEEN 759  
 SUMMITCREST BLACKBIRD 00W9  
 DR J ANALYST M250  
 WWR MS FIRST CERES T7J1

EPDs					Performance			
CED	BW	WW	YW	Milk	Act. BW	Adj. WW	WWRatio	
+7	+0.6	+77	+132	+26	70	804	114	
MARB	RE	Fat	%IMF	RE	BF	SC		
+0.50	+0.74	-0.013	4.43	15.2	0.28	31.0		
<b>\$W</b> +77	<b>\$F</b> +98	<b>\$G</b> +51	<b>\$B</b> +148					

◆ Heavy weaning bull with a moderate birth weight. WW top 3%, YW top 4%, \$W top 10%.



WWR Fortress G2



WWR Fortress G4

★★★ **LOT 6 WWR Fortress G6**

Calved: 1/26/2019 Tattoo: G6 Reg. #: 19520243

#CONNEALY CONSENSUS  
**K C F BENNETT FORTRESS**  
 THOMAS PATRICIA 9705

#KMK ALLIANCE 6595 I87  
 BLINDA OF CONANGA 004  
 #S S OBJECTIVE T510 0T26  
 THOMAS PATRICIA 71138

#SAV BEACON 0009  
**WWR MS BEACON 7E65**  
 WWR MS COMPLETE BEEF 1Y4

{ SAV BISMARCK 5682  
 SAV MADAME PRIDE 8180  
 SUMMITCREST COMPLETE 3W33  
 WWR MS STOCK ANALYST W98

EPDs					Performance			
CED	BW	WW	YW	Milk	Act. BW	Adj. WW	WWRatio	
+6	+0.2	+72	+125	+23	67	772	110	
MARB	RE	Fat	%IMF	RE	BF	SC		
+0.86	+0.70	-0.022	6.8	13.8	0.24	36.0		
\$W	\$F	\$G	\$B					
+69	+101	+68	+170					

◆ Calving ease and carcass and growth. 3rd highest %IMF. WW, YW, \$B top 10%. Marb top 15%.

★★★ **LOT 4 WWR Fortress G4**

Calved: 2/6/2019 Tattoo: G4 Reg. #: 19520244

#CONNEALY CONSENSUS  
**K C F BENNETT FORTRESS**  
 THOMAS PATRICIA 9705

#KMK ALLIANCE 6595 I87  
 BLINDA OF CONANGA 004  
 #S S OBJECTIVE T510 0T26  
 THOMAS PATRICIA 71138

#H A IMAGE MAKER 0415  
**WWR BOLD IMAGE Z17**  
**WWR MS CERES MAKER 6D75**  
 WWR MS COWBOY DIRECTION U836

{ WWR MS P13 CERES S625  
 OSU FUTURE DIRECTION 5180  
 WWR MS NEUTRON POWER S642

EPDs					Performance			
CED	BW	WW	YW	Milk	Act. BW	Adj. WW	WWRatio	
+10	-0.4	+74	+125	+25	62	814	115	
MARB	RE	Fat	%IMF	RE	BF	SC		
+0.40	+0.68	-0.015	4.57	15.7	0.29	36.5		
\$W	\$F	\$G	\$B					
+76	+94	+45	+139					

◆ Recommended for use on heifers. This heavy muscled calving ease bull weaned off well. WW top 5%, \$W top 10%

★★★ **LOT 8 WWR Fortress G8**

Calved: 1/27/2019 Tattoo: G8 Reg. #: 19520194

#CONNEALY CONSENSUS  
**K C F BENNETT FORTRESS**  
 THOMAS PATRICIA 9705

#KMK ALLIANCE 6595 I87  
 BLINDA OF CONANGA 004  
 #S S OBJECTIVE T510 0T26  
 THOMAS PATRICIA 71138

#HOOVER DAM  
**WWR MS HOOVER DAM 7E50**  
 WWR MS FORMAL DATE 0X9

{ #SYDGEN CC & 7  
 #ERICA OF ELLSTON C124  
 #SYDGEN MANDATE 6079  
 WWR MS FIRST CERES U85

EPDs					Performance			
CED	BW	WW	YW	Milk	Act. BW	Adj. WW	WWRatio	
+9	+0.3	+70	+124	+26	65	785	111	
MARB	RE	Fat	%IMF	RE	BF	SC		
+0.75	+0.72	-0.020	5.80	15.1	0.28	33.0		
\$W	\$F	\$G	\$B					
+70	+102	+63	+165					

◆ Recommended for use on heifers. Above average weaning weight, IMF and REA. WW, YW, \$B top 10%. \$W top 15%

★★★ **LOT 5 WWR Fortress G5**

Calved: 1/21/2019 Tattoo: G5 Reg. #: 19520242

#CONNEALY CONSENSUS  
**K C F BENNETT FORTRESS**  
 THOMAS PATRICIA 9705

#KMK ALLIANCE 6595 I87  
 BLINDA OF CONANGA 004  
 #S S OBJECTIVE T510 0T26  
 THOMAS PATRICIA 71138

#SAV FINAL ANSWER 0035  
**SAND POINT BUTKUS X797**  
**WWR MS BUTKUS 7E16**  
 WWR MS COWBOY DIRECTION T710

{ GAR GRID MAKER 4603  
 OSU FUTURE DIRECTION 5180  
 WWR MS MAGNUM R575

EPDs					Performance			
CED	BW	WW	YW	Milk	Act. BW	Adj. WW	WWRatio	
+8	+1.1	+76	+131	+23	61	780	111	
MARB	RE	Fat	%IMF	RE	BF	SC		
+0.62	+0.72	-0.034	5.24	15.1	0.22	34.5		
\$W	\$F	\$G	\$B					
+72	+99	+58	+157					

◆ Calving ease and growth. WW top 4%, YW top 5%, \$W and \$B top 15%

★★★ **LOT 9 WWR Fortress G9**

Calved: 1/28/2019 Tattoo: G9 Reg. #: 19520204

#CONNEALY CONSENSUS  
**K C F BENNETT FORTRESS**  
 THOMAS PATRICIA 9705

#KMK ALLIANCE 6595 I87  
 BLINDA OF CONANGA 004  
 #S S OBJECTIVE T510 0T26  
 THOMAS PATRICIA 71138

EF COMMANDO 1366  
**WWR MS COMMANDO 7E47**  
 WWR MS TOTALLY BEEF 2Z21

{ #EF COMPLEMENT 8088  
 RIVERBEND YOUNG LUCY W1470  
 #TC TOTAL 410  
 WWR MS NEW LEVEL R516

EPDs					Performance			
CED	BW	WW	YW	Milk	Act. BW	Adj. WW	WWRatio	
+11	-0.7	+69	+119	+25	54	756	107	
MARB	RE	Fat	%IMF	RE	BF	SC		
+0.78	+0.81	-0.029	5.83	15.4	0.21	36.5		
\$W	\$F	\$G	\$B					
+71	+97	+67	+164					

◆ Recommended for use on heifers. This one does a lot of things well. \$B top 10%. CED, BW, WW, YW,\$W, REA all top 15%. Marb top 25%. Above average REA and %IMF.

★★★  
**LOT 10 WWR Fortress G10**

Calved: 1/25/2019 Tattoo: G10 Reg. #: 19520229

#CONNEALY CONSENSUS  
**K C F BENNETT FORTRESS**  
THOMAS PATRICIA 9705

{ #KMK ALLIANCE 6595 I87  
BLINDA OF CONANGA 004  
#S S OBJECTIVE T510 0T26  
THOMAS PATRICIA 71138

THOMAS TOP HAND 0536  
**WWR MS TOP HAND 7E8**  
WWR MS DAY HORIZON 5C19

{ #S A V BISMARCK 5682  
THOMAS RUBY ERICA 8293  
MCR HORIZON 081  
#WWR MS FINAL ANSWER 1Y3

EPDs					Performance				
CED	BW	WW	YW	Milk	Act. BW	Adj. WW	WWRatio		
+12	-1.1	+66	+117	+23	50	702	100		
<b>MARB</b>	<b>RE</b>	<b>Fat</b>			<b>%IMF</b>	<b>RE</b>	<b>BF</b>	<b>SC</b>	
+0.52	+0.66	-0.027			4.14	14.2	0.24	36.5	
<b>\$W</b> +65	<b>\$F</b> +102	<b>\$G</b> +52			<b>\$B</b> +154				

◆ Recommended for use on heifers. CED and BW top 10%

★★★  
**LOT 13 WWR Top Hand G13**

Calved: 1/28/2019 Tattoo: G13 Reg. #: 19520210

#S A V BISMARCK 5682  
**THOMAS TOP HAND 0536**  
THOMAS RUBY ERICA 8293

{ #G A R GRID MAKER  
S A V ABIGALE 0451  
#MYTTY IN FOCUS  
THOMAS RUBY ERICA 51000

#B/R NEW DAY 454  
**WWR MS NEW DAY RISING 2Z39**  
WWR MS 036 PRIME W930

{ #BOYD NEW DAY 8005  
B/R RUBY 1224  
B/R NEW DESIGN 036-0119  
WWR MS TRAILBLAZERS S620

EPDs					Performance				
CED	BW	WW	YW	Milk	Act. BW	Adj. WW	WWRatio		
+12	-1.5	+54	+96	+21	60	698	99		
<b>MARB</b>	<b>RE</b>	<b>Fat</b>			<b>%IMF</b>	<b>RE</b>	<b>BF</b>	<b>SC</b>	
+0.94	+0.32	+0.048			7.15	13.6	0.43	39.0	
<b>\$W</b> +52	<b>\$F</b> +87	<b>\$G</b> +60			<b>\$B</b> +147				

◆ Recommended for use on heifers. Calving ease and carcass. 2nd highest % IMF. CED, BW top 10%, Marb top 15%.

★★★  
**LOT 11 WWR Fortress G11**

Calved: 1/30/2019 Tattoo: G1 Reg. #: 19520235

#CONNEALY CONSENSUS  
**K C F BENNETT FORTRESS**  
THOMAS PATRICIA 9705

{ #KMK ALLIANCE 6595 I87  
BLINDA OF CONANGA 004  
#S S OBJECTIVE T510 0T26  
THOMAS PATRICIA 71138

WWR BOLD IMAGE Z17  
**WWR MS CERES MAKER 5C40**  
WWR MS TRAILBLAZERS T729

{ #HA IMAGE MAKER 0415  
WWR MS P13 CERES S265  
B/R TRAILBLAZER 496  
WWR MS ELITE S36 BEEF

EPDs					Performance				
CED	BW	WW	YW	Milk	Act. BW	Adj. WW	WWRatio		
+11	-1.7	+52	+92	+18	63	618	88		
<b>MARB</b>	<b>RE</b>	<b>Fat</b>			<b>%IMF</b>	<b>RE</b>	<b>BF</b>	<b>SC</b>	
+0.44	+0.41	-0.009			4.53	13.9	0.28	33.5	
<b>\$W</b> +47	<b>\$F</b> +50	<b>\$G</b> +43			<b>\$B</b> +111				

◆ Recommended for use on heifers. BW top 5%, CED top 15%

★★★  
**LOT 14 WWR Top Hand G14**

Calved: 1/16/2019 Tattoo: G14 Reg. #: 19520205

#S A V BISMARCK 5682  
**THOMAS TOP HAND 0536**  
THOMAS RUBY ERICA 8293

{ #G A R GRID MAKER  
S A V ABIGALE 0451  
#MYTTY IN FOCUS  
THOMAS RUBY ERICA 51000

S S NIAGARA Z29  
**WWR MS NIAGARA 7E61**  
WWR MS BOLD IMAGE 2Z3

{ #HOOVER DAM  
JET S S X144  
#H A IMAGE MAKER 0415  
WWR MS 036 PRIME T753

EPDs					Performance				
CED	BW	WW	YW	Milk	Act. BW	Adj. WW	WWRatio		
+10	-0.1	+53	+99	+25	59	655	93		
<b>MARB</b>	<b>RE</b>	<b>Fat</b>			<b>%IMF</b>	<b>RE</b>	<b>BF</b>	<b>SC</b>	
+0.66	+0.64	-0.002			5.32	13.6	0.21	34.0	
<b>\$W</b> +52	<b>\$F</b> +106	<b>\$G</b> +56			<b>\$B</b> +162				

◆ Recommended for use on heifers.

★★★  
**LOT 12 WWR Top Hand G12**

Calved: 2/1/2019 Tattoo: G12 Reg. #: 19520209

#S A V BISMARCK 5682  
**THOMAS TOP HAND 0536**  
THOMAS RUBY ERICA 8293

{ #G A R GRID MAKER  
S A V ABIGALE 0451  
#MYTTY IN FOCUS  
THOMAS RUBY ERICA 51000

#HA IMAGE MAKER 0415  
**WWR MS BOLD IMAGE 2Z37**  
WWR MS M22 R556

{ #HERO 6267 OF RR 2418  
HA RITO BLACKCAP 9038  
WWR C CREEK HEART M22  
WWR MS REGENCY MAC L018M

EPDs					Performance				
CED	BW	WW	YW	Milk	Act. BW	Adj. WW	WWRatio		
+11	-1.0	+54	+93	+25	65	699	99		
<b>MARB</b>	<b>RE</b>	<b>Fat</b>			<b>%IMF</b>	<b>RE</b>	<b>BF</b>	<b>SC</b>	
+0.46	+0.44	+0.020			4.09	15.3	0.38	35.5	
<b>\$W</b> +58	<b>\$F</b> +88	<b>\$G</b> +41			<b>\$B</b> +129				

◆ Recommended for use on heifers. CED top 15%, BW top 10%

★★★  
**LOT 15 WWR Top Hand G15**

Calved: 2/6/2019 Tattoo: G15 Reg. #: 19520225

#S A V BISMARCK 5682  
**THOMAS TOP HAND 0536**  
THOMAS RUBY ERICA 8293

{ #G A R GRID MAKER  
S A V ABIGALE 0451  
#MYTTY IN FOCUS  
THOMAS RUBY ERICA 51000

BALDRIDGE WORKHORSE W74  
**WWR MS ALL WORK 4B43**  
WWR MS FINAL ANSWER 2Z5

{ #GAR-EGL PROTEGE  
BALDRIDGE MAVERICK T43  
SR FINAL ANSWER 9977  
WWR MS 036 PRIME N21

EPDs					Performance				
CED	BW	WW	YW	Milk	Act. BW	Adj. WW	WWRatio		
+5	+0.7	+59	+104	+20	73	708	100		
<b>MARB</b>	<b>RE</b>	<b>Fat</b>			<b>%IMF</b>	<b>RE</b>	<b>BF</b>	<b>SC</b>	
+0.55	+0.29	+0.049			4.32	13.6	0.44	35.0	
<b>\$W</b> +53	<b>\$F</b> +97	<b>\$G</b> +41			<b>\$B</b> +137				

◆ A good bull that was born in the cold.



★★ **LOT 16 WWR Top Hand G16**

Calved: 2/23/2019 Tattoo: G16 Reg. #: 19520223

#S A V BISMARCK 5682  
**THOMAS TOP HAND 0536**  
 THOMAS RUBY ERICA 8293

{ #G A R GRID MAKER  
 S A V ABIGALE 0451  
 #MYTTY IN FOCUS  
 THOMAS RUBY ERICA 51000

BALDRIDGE WORKHORSE W74  
**WWR MS ALL WORK 4B1**  
 WWR MS TRAILBLAZERS 0X41

{ #GAR-EGL PROTEGE  
 BALDRIDGE MAVERICK T43  
 B/R TRAILBLAZER 496  
 WWR MS 029 P71

EPDs					Performance			
CED	BW	WW	YW	Milk	Act. BW	Adj. WW	WWRatio	
+7	-0.5	+56	+101	+20	68	690	98	
<b>MARB</b>	<b>RE</b>	<b>Fat</b>			<b>%IMF</b>	<b>RE</b>	<b>BF</b>	<b>SC</b>
+0.55	+0.46	+0.021			4.19	13.3	0.32	31.5
<b>\$W</b> +51	<b>\$F</b> +106	<b>\$G</b> +46			<b>\$B</b> +152			

◆ Long bodied and level made.

★★ **LOT 19 WWR Top Hand G19**

Calved: 1/30/2019 Tattoo: G19 Reg. #: 19539837

#S A V BISMARCK 5682  
**THOMAS TOP HAND 0536**  
 THOMAS RUBY ERICA 8293

{ #G A R GRID MAKER  
 S A V ABIGALE 0451  
 #MYTTY IN FOCUS  
 THOMAS RUBY ERICA 51000

#H A IMAGE MAKER 0415  
**WWR MS BOLD IMAGE 3A39**  
 WWR MS NEUTRON POWER S642

{ #HERO 6267 OF R R 2418  
 H A RITO BLACKCAP 9038  
 S A NEUTRON 377-253  
 WWR MS REGENCY MAC L33 N10

EPDs					Performance			
CED	BW	WW	YW	Milk	Act. BW	Adj. WW	WWRatio	
+8	+0.2	+58	+102	+26	66	652	98	
<b>MARB</b>	<b>RE</b>	<b>Fat</b>			<b>%IMF</b>	<b>RE</b>	<b>BF</b>	<b>SC</b>
+0.5	+0.31	+0.016			4.34	13.1	0.18	32.0
<b>\$W</b> +61	<b>\$F</b> +102	<b>\$G</b> +42			<b>\$B</b> +144			

◆ Calving ease bull backed by proven genetics.

★★★ **LOT 17 WWR Top Hand G17**

Calved: 1/31/2019 Tattoo: G17 Reg. #: 19520197

#S A V BISMARCK 5682  
**THOMAS TOP HAND 0536**  
 THOMAS RUBY ERICA 8293

{ #G A R GRID MAKER  
 S A V ABIGALE 0451  
 #MYTTY IN FOCUS  
 THOMAS RUBY ERICA 51000

QLC FORUM R367T  
**WWR MS BEEF FORUM 0X39**  
 WWR MS FIRST CERES S653

{ QLC LAGRANF FORUM  
 QLC 1407 ANN N229R  
 #HOFF FIRST EDITION 058 242  
 WWR MS 036 PRIME N14

EPDs					Performance			
CED	BW	WW	YW	Milk	Act. BW	Adj. WW	WWRatio	
+11	-0.8	+53	+92	+23	60	702	100	
<b>MARB</b>	<b>RE</b>	<b>Fat</b>			<b>%IMF</b>	<b>RE</b>	<b>BF</b>	<b>SC</b>
+0.49	+0.58	+0.007			3.94	15.0	0.22	35.0
<b>\$W</b> +54	<b>\$F</b> +104	<b>\$G</b> +46			<b>\$B</b> +150			

◆ Recommended for use on heifers. CED and BW top 15%

★★ **LOT 20 WWR Top Hand G20**

Calved: 1/28/2019 Tattoo: G20 Reg. #: 19539840

#S A V BISMARCK 5682  
**THOMAS TOP HAND 0536**  
 THOMAS RUBY ERICA 8293

{ #G A R GRID MAKER  
 S A V ABIGALE 0451  
 #MYTTY IN FOCUS  
 THOMAS RUBY ERICA 51000

#H A IMAGE MAKER 0415  
**WWR MS BOLD IMAGE 3A39**  
 WWR MS NEUTRON POWER S642

{ #HERO 6267 OF R R 2418  
 H A RITO BLACKCAP 9038  
 S A NEUTRON 377-253  
 WWR MS REGENCY MAC L33 N10

EPDs					Performance			
CED	BW	WW	YW	Milk	Act. BW	Adj. WW	WWRatio	
+8	-1.1	+56	+98	+26	58	656	99	
<b>MARB</b>	<b>RE</b>	<b>Fat</b>			<b>%IMF</b>	<b>RE</b>	<b>BF</b>	<b>SC</b>
+0.56	+0.39	+0.027			4.9	14.3	0.29	34.5
<b>\$W</b> +61	<b>\$F</b> +103	<b>\$G</b> +45			<b>\$B</b> +147			

◆ BW top 10%

**LOT 18 WWR Top Hand G18**

Calved: 2/8/2019 Tattoo: G18 Reg. #: 19539838

#S A V BISMARCK 5682  
**THOMAS TOP HAND 0536**  
 THOMAS RUBY ERICA 8293

{ #G A R GRID MAKER  
 S A V ABIGALE 0451  
 #MYTTY IN FOCUS  
 THOMAS RUBY ERICA 51000

#H A IMAGE MAKER 0415  
**WWR MS BOLD IMAGE 3A39**  
 WWR MS NEUTRON POWER S642

{ #HERO 6267 OF R R 2418  
 H A RITO BLACKCAP 9038  
 S A NEUTRON 377-253  
 WWR MS REGENCY MAC L33 N10

EPDs					Performance			
CED	BW	WW	YW	Milk	Act. BW	Adj. WW	WWRatio	
+8	+3.5	+64	+112	+26	88	684	103	
<b>MARB</b>	<b>RE</b>	<b>Fat</b>			<b>%IMF</b>	<b>RE</b>	<b>BF</b>	<b>SC</b>
+0.55	+0.34	+0.015			4.82	13.5	0.25	38.0
<b>\$W</b> +58	<b>\$F</b> +112	<b>\$G</b> +45			<b>\$B</b> +157			

◆ Growthy bull that should add pounds at weaning.



WWR Top Hand G18

**★ LOT 22 WWR Top Hand G22**

Calved: 2/19/2019 Tattoo: G22 Reg. #: 19520196

#S A V BISMARCK 5682  
**THOMAS TOP HAND 0536**  
 THOMAS RUBY ERICA 8293

#CONNEALY ALL AROUND  
**WWR MS ALL POWERED 0X38**  
 WWR MS M22 R513

EPDs

CED	BW	WW	YW	Milk
+6	+1.1	+60	+102	+21
<b>MARB</b>	<b>RE</b>	<b>Fat</b>		
+0.68	+0.39	+0.026		
<b>\$W</b> +56	<b>\$F</b> +96	<b>\$G</b> +51	<b>\$B</b> +147	

◆ Should add pounds at weaning while keeping birth weight in check.

**★★★ LOT 25 WWR Flat Top G25**

Calved: 1/26/2019 Tattoo: G25 Reg. #: 19520239

#CONNEALY BLACK GRANITE  
**WERNER FLAT TOP 4136**  
 #WERNER LADY 0304

#EF COMPLEMENT 8088  
**WWR MS COMPLEMENT PLUS 6D38**  
 WWR MS LB84 S645

EPDs

CED	BW	WW	YW	Milk
+14	-2.4	+49	+98	+31
<b>MARB</b>	<b>RE</b>	<b>Fat</b>		
+0.43	+0.34	+0.031		
<b>\$W</b> +56	<b>\$F</b> +75	<b>\$G</b> +37	<b>\$B</b> +112	

◆ Recommended for use on heifers. BW top 2%, CED top 4%

**★★ LOT 23 WWR Top Hand G23**

Calved: 2/13/2019 Tattoo: G23 Reg. #: 19520220

#S A V BISMARCK 5682  
**THOMAS TOP HAND 0536**  
 THOMAS RUBY ERICA 8293

44 COUNTRY X802  
**WWR MS COUNTRY DAY 3A51**  
 WWR MS BEEF FORUM 0X1

EPDs

CED	BW	WW	YW	Milk
+9	-0.6	+55	+98	+19
<b>MARB</b>	<b>RE</b>	<b>Fat</b>		
+0.55	+0.50	+0.028		
<b>\$W</b> +50	<b>\$F</b> +97	<b>\$G</b> +46	<b>\$B</b> +142	

◆ Calving ease bull that weaned and scanned well. BW top 15%

**★★★ LOT 26 WWR Flat Top G26**

Calved: 1/26/2019 Tattoo: G26 Reg. #: 19520221

#CONNEALY BLACK GRANITE  
**WERNER FLAT TOP 4136**  
 #WERNER LADY 0304

#CONNEALY COMRADE 1385  
**WWR MS CASH COMRADE 6D58**  
 #WWR MS ALL WORK 4B28

EPDs

CED	BW	WW	YW	Milk
+11	-1.3	+61	+120	+30
<b>MARB</b>	<b>RE</b>	<b>Fat</b>		
+0.51	+0.82	-0.015		
<b>\$W</b> +64	<b>\$F</b> +95	<b>\$G</b> +52	<b>\$B</b> +147	

◆ Recommended for use on heifers. Born small, grew fast. BW top 10%, CED, YW, REA top 15%

**★★★ LOT 24 WWR Flat Top G24**

Calved: 2/12/2019 Tattoo: G24 Reg. #: 19520251

#CONNEALY BLACK GRANITE  
**WERNER FLAT TOP 4136**  
 #WERNER LADY 0304

QLC FORUM R367T  
**WWR MS BEEF FORUM**  
 WWR MS EXT 94 MAC L091

EPDs

CED	BW	WW	YW	Milk
+13	-2.0	+39	+77	+29
<b>MARB</b>	<b>RE</b>	<b>Fat</b>		
+0.38	+0.45	+0.004		
<b>\$W</b> +45	<b>\$F</b> +62	<b>\$G</b> +40	<b>\$B</b> +102	

◆ Recommended for use on heifers. BW top 4%, CED top 10%



**WWR Flat Top G26**

★★★ **LOT 27 WWR Flat Top G27**

Calved: 2/8/2019 Tattoo: G27 Reg. #: 19520227

#CONNEALY BLACK GRANITE  
**WERNER FLAT TOP 4136**  
 #WERNER LADY 0304

#HERO 6267 OF R R 2418  
 H A RITO BLACKCAP 9038  
 B/R NEW DESIGN 036-0119  
**WWR MS NEUTRON POWER S618**

#H A IMAGE MAKER 0415  
**WWR MS BOLD IMAGE 4B60**  
 WWR MS 036 PRIME 0X8

EPDs Performance  

CED	BW	WW	YW	Milk	Act. BW	Adj. WW	WWRatio
+12	-0.6	+49	+96	+31	67	691	98
MARB	RE	Fat	%IMF	RE	BF	SC	
+0.34	+0.48	-0.018	4.44	14.4	0.24	34.5	
\$W	\$F	\$G	\$B				
+54	+77	+40	+116				

◆ Recommended for use on heifers. CED top 10%, BW top 15%

★★★ **LOT 30 WWR Kiowa G30**

Calved: 1/20/2019 Tattoo: G30 Reg. #: 19520222

#CONNEALY IN SURE 8524  
**KF KIOWA 6151**  
 PLATTEMERE DAISY 404

#CONNEALY CONSENSUS 7229  
 HAPPY GEE OF CONANGA 919  
 #PLATTEMERE WEIGH UP K360  
 PLATTEMERE DAISY 373

MOHNSUBSTANTIAL 272  
**WWR MS SUBSTANTIAL 7E38**  
 WWR MS IN LIMELIGHT 4B32

BENFIELD SUBSTANTIAL 8506  
 MOHNEN GLYN MAWR ELBA 1758  
 WHS LIMELIGHT 64V  
 WWR MS M234 P19

EPDs Performance  

CED	BW	WW	YW	Milk	Act. BW	Adj. WW	WWRatio
+9	-0.2	+66	+121	+23	59	698	99
MARB	RE	Fat	%IMF	RE	BF	SC	
+0.36	+0.49	+0.00	3.81	12.9	0.23	34.0	
\$W	\$F	\$G	\$B				
+62	+90	+39	+129				

◆ Recommended for use on heifers. BW top 20%, WW top 20%, YW top 15%

★ **LOT 28 WWR Kiowa G28**

Calved: 2/17/2019 Tattoo: G28 Reg. #: 19540074

#CONNEALY IN SURE 8524  
**KF KIOWA 6151**  
 PLATTEMERE DAISY 404

QLC LAGRANF FORUM  
 QLC 1407 ANN N229R  
**WWR MS BEEF FORUM 0X47**  
 WWR MS COWBOY DIRECTION T758

OSU FUTURE DIRECTION 5180  
 WWR MS MAGNUM R551

EPDs Performance  

CED	BW	WW	YW	Milk	Act. BW	Adj. WW	WWRatio
+6	+1.0	+59	+107	+26	66	715	101
MARB	RE	Fat	%IMF	RE	BF	SC	
+0.56	+0.45	+0.007	5.00	14.4	0.27	29.5	
\$W	\$F	\$G	\$B				
+61	+77	+48	+124				

◆ Like the Comrades and Hickoks these Kiowa bulls are extra gentle.

**LOT 31 WWR Sure Fire G31**

Calved: 2/5/2019 Tattoo: G31 Reg. #: 19520236

#CONNEALY IN SURE 8524  
**G A R SURE FIRE**  
 CHAIR ROCK 5050 G A R 8086

SHIPWHEEL MONTANA 2600  
**WWR MS BIG MONTANA 5C53**  
 WWR MS STOCK ANALYST W98

#MYTTY IN FOCUS  
 ENTREENA OF CONANGA 657  
 #G A R NEW DESIGN 5050  
 CHAIR ROCK GRID MAKER 2107

S CHISUM 6175  
 DR J MS WIDE TRACK 374 M15  
 DR J ANALYST M250  
 WWR MS FOCUSED IN T72

EPDs Performance  

CED	BW	WW	YW	Milk	Act. BW	Adj. WW	WWRatio
+6	+2.2	+60	+111	+26	79	723	103
MARB	RE	Fat	%IMF	RE	BF	SC	
+0.29	+0.42	+0.045	4.37	14.0	0.33	39.0	
\$W	\$F	\$G	\$B				
+55	+96	+54	+151				

◆ This deep bodied bull has one of the larger scrotal measurements.

★★★ **LOT 29 WWR Kiowa G29**

Calved: 1/21/2019 Tattoo: G29 Reg. #: 19520228

#CONNEALY IN SURE 8524  
**KF KIOWA 6151**  
 PLATTEMERE DAISY 404

THOMAS TOP HAND 0536  
**WWR MS TOP HAND 7E1**  
 WWR MS PRIME EXPERT 5C15

#S A V BISMARCK 5682  
 THOMAS RUBY ERICA 8293  
 KCF BENNETT EXPERT Z138  
 WWR MS DESTROYER II W920

EPDs Performance  

CED	BW	WW	YW	Milk	Act. BW	Adj. WW	WWRatio
+8	-0.2	+66	+122	+26	65	722	102
MARB	RE	Fat	%IMF	RE	BF	SC	
+0.7	+0.45	-0.003	5.19	12.4	0.26	33.0	
\$W	\$F	\$G	\$B				
+65	+105	+55	+160				

◆ Recommended for use on heifers. YW top 10%, BW, WW top 15%



**WWR Kiowa G29**



WWR Sure Fire G32

\*\*\* LOT 35 WWR Sure Fire G35

Calved: 2/4/2019 Tattoo: G35 Reg. #: 19524787

#CONNEALY IN SURE 8524  
**G A R SURE FIRE**  
 CHAIR ROCK 5050 G A R 8086

{ #MYTTY IN FOCUS  
 ENTREENA OF CONANGA 657  
 #G A R NEW DESIGN 5050  
 CHAIR ROCK GRID MAKER 2107

B/R TRAILBLAZER 496  
**WWR MS TRAILBLAZERS 1Y37**  
 WWR MS STOCKMN HEART L010

{ #B/R DESTINATION 727-928  
 #B/R RUBY 073  
 #TC STOCKMAN 365  
 WWR MS HEARTLAND 741

EPDs					Performance			
CED	BW	WW	YW	Milk	Act. BW	Adj. WW	WWRatio	
+7	+1.6	+45	+85	+26	67	689	98	
MARB	RE	Fat	%IMF	RE	BF	SC		
+1.25	+0.36	+0.027	7.69	14.4	0.35	37.0		
<b>\$W</b> +49	<b>\$F</b> +79	<b>\$G</b> +78	<b>\$B</b> +156					

◆ Highest % IMF bull, Marb top 3%

\*\*\* LOT 32 WWR Sure Fire G32

Calved: 2/12/2019 Tattoo: G32 Reg. #: 19520195

#CONNEALY IN SURE 8524  
**G A R SURE FIRE**  
 CHAIR ROCK 5050 G A R 8086

{ #MYTTY IN FOCUS  
 ENTREENA OF CONANGA 657  
 #G A R NEW DESIGN 5050  
 CHAIR ROCK GRID MAKER 2107

#MCC DAYBREAK  
**WWR MS DAY TRADER 0X37**  
 #WWR MS NEUTRON POWER U845

{ #BOYD NEW DAY 8005  
 MCC MISS FOCUS 134  
 S A NEUTRON 377-253  
 WWR MS CFREIGHT SBF L09

EPDs					Performance			
CED	BW	WW	YW	Milk	Act. BW	Adj. WW	WWRatio	
+14	-1.0	+58	+106	+29	58	749	106	
MARB	RE	Fat	%IMF	RE	BF	SC		
+1	+0.87	+0.011	6.47	17.0	0.32	34.5		
<b>\$W</b> +65	<b>\$F</b> +99	<b>\$G</b> +74	<b>\$B</b> +173					

◆ Recommended for use on heifers. Calving ease and carcass. CED top 4%, \$B top 5%, BW, Marb top 10%, REA top 15%

\*\*\* LOT 40 WWR Bankroll G40

Calved: 1/29/2019 Tattoo: G40 Reg. #: 19520238

#BARSTOW CASH  
**BARSTOW BANKROLL B73**  
 BARSTOW MISS DIANNA Z25

{ #SITZ DASH 10277  
 BARSTOW QUEEN W16  
 #CAR EFFICIENT 534  
 #BARSTOW MISS DIANNA X128

#BASIN PAYWEIGHT 1682  
**WWR MS GLOBAL PAY 6D11**  
 WWR MS DAY TRADER 0X19

{ #BASIN PAYWEIGHT 006S  
 21AR O LASS 7017  
 #MCC DAYBREAK  
 WWR MS TIEBREAKER U823

EPDs					Performance			
CED	BW	WW	YW	Milk	Act. BW	Adj. WW	WWRatio	
+13	-1.8	+63	+116	+25	63	778	110	
MARB	RE	Fat	%IMF	RE	BF	SC		
+0.45	+0.61	+0.031	4.38	16.0	0.33	35.5		
<b>\$W</b> +64	<b>\$F</b> +105	<b>\$G</b> +42	<b>\$B</b> +147					

◆ Recommended for use on heifers. BW top 4%, CED top 10%.

\*\*\* LOT 34 WWR Sure Fire G34

Calved: 2/3/2019 Tattoo: G34 Reg. #: 19520226

#CONNEALY IN SURE 8524  
**G A R SURE FIRE**  
 CHAIR ROCK 5050 G A R 8086

{ #MYTTY IN FOCUS  
 ENTREENA OF CONANGA 657  
 #G A R NEW DESIGN 5050  
 CHAIR ROCK GRID MAKER 2107

WWR BOLD IMAGE Z17  
**WWR MS CRESE MAKER 486**  
 WWR MS REGENCY MAC L018M

{ #HA IMAGE MAKER 0415  
 WWR MS P13 CERES S625  
 WWR TOP REGENCY 822  
 WWR MAC KENZIE 272M

EPDs					Performance			
CED	BW	WW	YW	Milk	Act. BW	Adj. WW	WWRatio	
+15	-3.0	+38	+68	+25	54	602	85	
MARB	RE	Fat	%IMF	RE	BF	SC		
+0.98	+0.62	+0.011	6.42	16.1	0.26	32.5		
<b>\$W</b> +44	<b>\$F</b> +75	<b>\$G</b> +70	<b>\$B</b> +145					

◆ Recommended for use on heifers. Calving ease and carcass. BW top 1%, CED top 2%, Marb top 10%



WWR Bankroll G40

★ **LOT 41 WWR Bankroll G41**

Calved: 2/21/2019 Tattoo: G41 Reg. #: 19520249

#BARSTOW CASH  
**BARSTOW BANKROLL B73**  
 BARSTOW MISS DIANNA Z25

{ #SITZ DASH 10277  
 BARSTOW QUEEN W16  
 #CAR EFFICIENT 534  
 #BARSTOW MISS DIANNA X128

#S S OBJECTIVE T510 0T26  
**#WWR MS NICE OBJECTIVE W913**  
 WWR MS P3 CERES S641

{ #S S TRAVELER 6807 T510  
 S S MISS RITA R011 7R8  
 WWR FIRST CERES P03  
 WWR MS CFREIGHT SBF L09

EPDs					Performance			
CED	BW	WW	YW	Milk	Act. BW	Adj. WW	WWRatio	
+6	+1.6	+63	+113	+19	78	767	109	
MARB	RE	Fat	%IMF	RE	BF	SC		
+0.36	+0.5	+0.007	3.71	14.1	0.24	33.0		
\$W +54	\$F +85	\$G +39	\$B +123					

◆ Should add pounds at weaning, out of a very productive cow.

★★★ **LOT 45 WWR Hickok G45**

Calved: 2/21/2019 Tattoo: G45 Reg. #: 19520211

#CONNEALY CONSENSUS 7229  
**MILL BAR HICKOK 7242**  
 MILL BAR BEMINDFUL MAID 6304

{ #CONNEALY CONSENSUS  
 BLUE LILLY OF CONANGA 16  
 #S A V FINAL ANSWER 0035  
 MILL BAR LADY DI 3400

#B P F SPECIAL FOCUS 504  
**WWR MS FOCUS 226**  
 WWR MS 036 PRIME 0X15

{ #MYTTY IN FOCUS  
 B P F BLACK CASH 341  
 B/R NEW DESIGN 036-0119  
 WWRMS COWBOY DIRECTION U844

EPDs					Performance			
CED	BW	WW	YW	Milk	Act. BW	Adj. WW	WWRatio	
+12	-0.1	+51	+87	+26	71	691	98	
MARB	RE	Fat	%IMF	RE	BF	SC		
+0.59	+0.48	+0.031	5.05	14.8	0.41	33.5		
\$W +55	\$F +70	\$G +47	\$B +117					

◆ Recommended for use on heifers. Extra gentle.

★ **LOT 42 WWR Hickok G42**

Calved: 1/26/2019 Tattoo: G42 Reg. #: 19520245

#CONNEALY CONSENSUS 7229  
**MILL BAR HICKOK 7242**  
 MILL BAR BEMINDFUL MAID 6304

{ #CONNEALY CONSENSUS  
 BLUE LILLY OF CONANGA 16  
 #S A V FINAL ANSWER 0035  
 MILL BAR LADY DI 3400

WWR CHISUM TRAIL A24  
**WWR MS BEEF TRAIL 6D77**  
 WWR MS FIRST CERES U843

{ #S CHISUM 6175  
 WWR MS LASER TAG W94  
 #HOFF FIRST EDITION 058 242  
 WWR MS BLUE VAL M5

EPDs					Performance			
CED	BW	WW	YW	Milk	Act. BW	Adj. WW	WWRatio	
+6	+1.8	+68	+111	+23	81	781	111	
MARB	RE	Fat	%IMF	RE	BF	SC		
+0.45	+0.63	+0.02	5.13	15.8	0.32	34.0		
\$W +66	\$F +88	\$G +43	\$B +131					

◆ These Hickoks are extra gentle. WW top 15%

★★★ **LOT 46 WWR Hickok G46**

Calved: 2/25/2019 Tattoo: G46 Reg. #: 19520224

#CONNEALY CONSENSUS 7229  
**MILL BAR HICKOK 7242**  
 MILL BAR BEMINDFUL MAID 6304

{ #CONNEALY CONSENSUS  
 BLUE LILLY OF CONANGA 16  
 #S A V FINAL ANSWER 0035  
 MILL BAR LADY DI 3400

#S A V BRILLIANCE 8077  
**WWR MS PURE BRILLIANCE 4B27**  
 WWR MS TOTALLY BEEF W927

{ #S A V BISMARCK 5682  
 S A V BLACKCAP MAY 5270  
 #TC TOTAL 410  
 WWR MS JUMBO WEST 0187

EPDs					Performance			
CED	BW	WW	YW	Milk	Act. BW	Adj. WW	WWRatio	
+8	+1.1	+56	+96	+21	77	674	96	
MARB	RE	Fat	%IMF	RE	BF	SC		
+0.27	+0.62	+0.002	3.7	14.1	0.36	33.5		
\$W +51	\$F +78	\$G +36	\$B +114					

◆ A good bull. Heavy muscled and thick with a quiet disposition.

★★★ **LOT 43 WWR Hickok G43**

Calved: 2/1/2019 Tattoo: G43 Reg. #: 19520233

#CONNEALY CONSENSUS 7229  
**MILL BAR HICKOK 7242**  
 MILL BAR BEMINDFUL MAID 6304

{ #CONNEALY CONSENSUS  
 BLUE LILLY OF CONANGA 16  
 #S A V FINAL ANSWER 0035  
 MILL BAR LADY DI 3400

#S A V BRILLIANCE 8077  
**#WWR MS PURE BRILLIANCE 5C24**  
 WWR MS TOTALLY BEEF W925

{ #S A V BISMARCK 5682  
 S A V BLACKCAP MAY 5270  
 #TC TOTAL 410  
 WWR MS FIRST CERES S653

EPDs					Performance			
CED	BW	WW	YW	Milk	Act. BW	Adj. WW	WWRatio	
+10	+0.7	+61	+105	+25	72	729	103	
MARB	RE	Fat	%IMF	RE	BF	SC		
+0.53	+0.64	+0.02	4.97	14.0	0.39	39.0		
\$W +63	\$F +80	\$G +47	\$B +127					

◆ Recommended for use on heifers.



WWR Hickok G43

**★ LOT 49 WWR Comrade G49**

Calved: 1/25/2019 Tattoo: G49 Reg. #: 19520246

#CONNEALY CONSENSUS 7229 { #CONNEALY CONSENSUS  
BLUE LILLY OF CONANGA 16  
#CONNEALY COMRADE 1385 { #G A R NEW DESIGN 5050  
HAPPY GEE OF CONANGA 919 { HAP GINA OF CONANGA 260 4965

M A F TANKER 23 { #CONNEALY RIGHT ANSWER 746  
JACKIE LASS 032 OF TRIPP  
WWR MS TANKER 7E11 { B/R TRAILBLAZER 496  
WWR MS TRAILBLAZERS W938 { WWR MS EXT 94 VALE L066

EPDs Performance  
CED BW WW YW Milk Act. BW Adj. WW WWRatio  
+4 +1.7 +63 +116 +24 71 766 109  
MARB RE Fat %IMF RE BF SC  
+0.58 +0.42 +0.023 4.96 13.6 0.35 30.5  
\$W +57 \$F +82 \$G +47 \$B +129

◆ Gentle bull, should add pounds at weaning.

**★★★ LOT 53 WWR Payweight Plus G53**

Calved: 2/9/2019 Tattoo: G53 Reg. #: 19520203

#BASIN PAYWEIGHT 1682 { #BASIN PAYWEIGHT 006S  
21AR O LASS 7017  
BASIN PAYWEIGHT PLUS 6048 { #CONNEALY CONSENSUS 7229  
EXAR ROYAL LASS 2810 { EXAR ROYAL LASS 1067

MF DESTROYER 37 { EXAR SUDDEN IMPACT 1537  
M F CHERRY 115  
WWR MS DESTROYER II 1Y8 { SCHURRTOP WWR REGENCY  
WWR MS REGENCY SCOTCH L073 { WWR MS SCOTCH ALBERT 760

EPDs Performance  
CED BW WW YW Milk Act. BW Adj. WW WWRatio  
+11 -0.8 +58 +101 +33 68 719 102  
MARB RE Fat %IMF RE BF SC  
+0.37 +0.33 +0.029 4.20 13.9 0.33 36.0  
\$W +69 \$F +80 \$G +34 \$B +115

◆ Recommended for use on heifers. CED, BW top 15%

**★★★ LOT 50 WWR Comrade G50**

Calved: 1/21/2019 Tattoo: G50 Reg. #: 19520241

#CONNEALY CONSENSUS 7229 { #CONNEALY CONSENSUS  
BLUE LILLY OF CONANGA 16  
#CONNEALY COMRADE 1385 { #G A R NEW DESIGN 5050  
HAPPY GEE OF CONANGA 919 { HAP GINA OF CONANGA 260 4965

THOMAS TOP HAND 0536 { #S A V BISMARCK 5682  
THOMAS RUBY ERICA 8293  
WWR MS TOP BEEF 6D68 { R B BAROMETER 9721  
WWR MS BEEF BAROMETER 4B40 { WWR MS NEW DAY RISING 2Z24

EPDs Performance  
CED BW WW YW Milk Act. BW Adj. WW WWRatio  
+12 -1.3 +56 +102 +27 63 702 100  
MARB RE Fat %IMF RE BF SC  
+0.59 +0.47 +0.029 4.63 14.0 0.34 36.5  
\$W +60 \$F +80 \$G +47 \$B +127

◆ Recommended for use on heifers. An extra gentle bull. CED, BW top 10%

**★★★ LOT 54 WWR Payweight Plus G54**

Calved: 2/22/2019 Tattoo: G54 Reg. #: 19520212

#BASIN PAYWEIGHT 1682 { #BASIN PAYWEIGHT 006S  
21AR O LASS 7017  
BASIN PAYWEIGHT PLUS 6048 { #CONNEALY CONSENSUS 7229  
EXAR ROYAL LASS 2810 { EXAR ROYAL LASS 1067

WWR ALL POWERED X37 { #CONNEALY ALL AROUND  
WWR MS SC 787 N24  
WWR MS POWERED BEEF 2Z9 { S A NEUTRON 377-253  
WWR MS NEUTRON POWER S630 { WWR MS HEART FORTUNE 9078

EPDs Performance  
CED BW WW YW Milk Act. BW Adj. WW WWRatio  
+10 -0.5 +57 +101 +29 67 716 102  
MARB RE Fat %IMF RE BF SC  
+0.76 +0.33 +0.026 5.91 13.6 0.35 38.0  
\$W +63 \$F +78 \$G +54 \$B +132

◆ Recommended for use on heifers.

**LOT 52 WWR Identity G52**

Calved: 2/23/2019 Tattoo: G52 Reg. #: 19520201

#TC ABERDEEN 759 { #C R A BEXTOR 872 5205 608  
#ELLINGSON IDENTITY 9104 { #TC BLACKBIRD 4034  
EA QUEEN DOLLY 7813 { #WULFFS EXT 6106  
EA QUEEN DOLLY 5029

SUMMITCREST COMPLETE 3W33 { #SUMMITCREST COMPLETE 1P55  
SUMMITCREST HEIRESS 4S81  
WWR MS COMPLETE BEEF 1Y38 { WWR HL CONTINUITY P069  
WWR MS P69 CONTINUITY W950 { WWR MS BJ R554

EPDs Performance  
CED BW WW YW Milk Act. BW Adj. WW WWRatio  
+5 +1.3 +52 +87 +24 84 751 107  
MARB RE Fat %IMF RE BF SC  
+0.72 +0.40 +0.018 5.81 13.7 0.23 34.0  
\$W +52 \$F +75 \$G +54 \$B +129

◆ Should add pounds at weaning and improve %IMF.



**WWR Payweight Plus G54**

**★ LOT 56 WWR Remedy G56**

Calved: 2/9/2019 Tattoo: G56 Reg. #: 19520213

#CONNEALY THUNDER  
**#CTS REMEDY 1T01**  
 CTS 7V03 BELLEMERE MAID 9T02

#G A R PROPHET  
**WWR MS BEEF PROPHET 6D33**  
 WWR MS CHISUM TRAIL 3A26

EPDs

CED	BW	WW	YW	Milk	Act. BW	Adj. WW	WWRatio
+3	+0.7	+64	+119	+29	66	760	108
MARB	RE	Fat	%IMF	RE	BF	SC	
+0.71	+0.53	+0.003	5.36	12.9	0.23	36.5	
\$W +65	\$F +97	\$G +56	\$B +154				

◆ Long bodied and above average weaning weight.

**★★★ LOT 63 WWR Command G63**

Calved: 2/12/2019 Tattoo: G63 Reg. #: 19520193

EF COMMANDO 1366  
**WWR COMMANDO E35**  
 WWR MS TOTALLY BEEF U853

WWR BOLD IMAGE Z17  
**WWR MS BOLD IMAGE 7E14**  
 WWR MS DESTROYER II 0X27

EPDs

CED	BW	WW	YW	Milk	Act. BW	Adj. WW	WWRatio
+10	-0.3	+57	+95	+28	61	766	109
MARB	RE	Fat	%IMF	RE	BF	SC	
+0.34	+0.57	-0.007	3.92	14.6	0.22	32.0	
\$W +64	\$F +85	\$G +40	\$B +125				

◆ Recommended for use on heifers. CED, BW top 20%

**★ LOT 58 WWR Remedy G58**

Calved: 2/14/2019 Tattoo: G58 Reg. #: 19520248

#CONNEALY THUNDER  
**#CTS REMEDY 1T01**  
 CTS 7V03 BELLEMERE MAID 9T02

#G A R PREDESTINED  
**WWR MS FULL DESTINATION W911**  
 WWR MS REGENCY VALE L0115

EPDs

CED	BW	WW	YW	Milk	Act. BW	Adj. WW	WWRatio
+3	+0.7	+46	+89	+25	69	692	98
MARB	RE	Fat	%IMF	RE	BF	SC	
+0.63	+0.69	-0.001	4.86	16.0	0.31	35.0	
\$W +43	\$F +82	\$G +55	\$B +137				

◆ Heavy muscled and gentle.

**★ LOT 64 WWR Command G64**

Calved: 2/23/2019 Tattoo: G64 Reg. #: 19520206

EF COMMANDO 1366  
**WWR COMMANDO E35**  
 WWR MS TOTALLY BEEF U853

SANDPOINT BUTKUS X797  
**WWR MS BUTKUS 7E17**  
 WWR MS ABERDEEN LAD 2Z33

EPDs

CED	BW	WW	YW	Milk	Act. BW	Adj. WW	WWRatio
+8	+1.1	+62	+108	+25	61	737	105
MARB	RE	Fat	%IMF	RE	BF	SC	
+0.65	+0.66	+0.001	4.83	16.1	0.30	33.5	
\$W +61	\$F +85	\$G +55	\$B +141				

◆ Thick made with a square top.



WWR Remedy G58

**LOT 66 WWR All Work G66**

Calved: 2/19/2019 Tattoo: G66 Reg. #: 19520234

BALDRIDGE WORKHORSE W74  
**WWR ALL WORK D10**  
 WWR MS NEW DAY RISING 4B12

#KOU PAL ADVANCE 28  
**WWR MS BOLD ADVANCE 5C3K**  
 WWR MS N31 S6K1

EPDs

CED	BW	WW	YW	Milk	Act. BW	Adj. WW	WWRatio
+4	+1.0	+48	+88	+23	71	689	98
MARB	RE	Fat	%IMF	RE	BF	SC	
+0.27	+0.64	-0.018	4.25	14.8	0.30	33.5	
\$W +44	\$F +77	\$G +39	\$B +115				

◆ Clean fronted and square made.

\*\*\*\*\*

## 20 Purebred Open Angus Commercial Heifers & 10 Open Black Whiteface Angus x Polled Hereford Heifers

COMMERCIAL HEIFERS

The commercial Angus and F1 Polled Hereford cross baldy heifers have the same excellent genetics as the base of our cow herd. Calving ease, milking ability, easy fleshing ability, fertility, and excellent longevity in your herd. Carcass genetics and feeding performance is a mainstay of our herd. Weights will range from 650 - 800 pounds by sale day. These heifers are unbranded so that when you put yours on, it will be the first and only brand on them.

We sort these heifers into uniform groups of 10 head and when selling the buyers will have the chance to pick from 1 to 10 heifers. After the first selection, if any heifers remain in that pen, then the next opportunity will be to buy out of that draft for same money. If any remain after that, then the next winning bid cleans the ring.

We've also started them on their first round of prebreeding vaccinations for those of you who choose to go with a modified live vaccination, they were administered at the same time as their Bangs vaccination, a dose of Zoetis Bovishield Gold 5 VL5. This way if you choose to continue with that program during their lifetime it's already started for you. We recommend that you continue with a vaccination schedule throughout these animals' lifetime.

We are deeply committed to the over all health of our herd and strongly believe a good and proper vaccination program is the foundation to the health and vigor of the cows, calves, and bulls which go through our ranch.

### Birth

Ultra Choice 7  
Clostridium Type A  
Vitamin E,A&D

### May

One Shot Ultra 7  
Bovi Shield Gold 5  
Booster Type A  
Long Range Dewormer

### September

One Shot Ultra 7  
Bovi Shield Gold 5  
Dectomax Pour On

### December

Bangs Vac.  
Bovi Shield Gold 5  
Vibram  
Promectrin Pour On



**We'll see you next year!**  
**March 9, 2021**





### Can't make the sale?

We are pleased to bring you real-time Internet bidding and a live broadcast of this sale through DV Auction. To watch or bid online, simply complete the following steps:

- 1) Visit the DVAuction web site at [www.dvauction.com](http://www.dvauction.com)
  - 2) Click on the "Register" tab
  - 3) Enter a user name, password and your contact information.
  - 4) Click on "Apply for Bidding."
- Select the sale from the list of other auctions and click "Apply".
  - Complete the process by filling out the Banking & Lending information requested.
  - Be sure to include a personal contact at your bank, we will contact them in order to get a credit reference.
  - If you would prefer to be approved using your credit card, call (402) 316-5460.
  - Please be sure to apply for bidding at least a day in advance of the sale-every effort will be made to process your application in a timely manner.

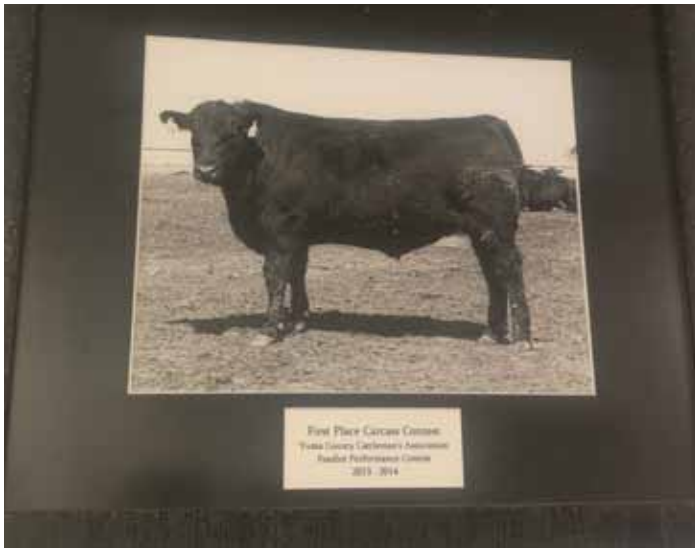
DVAuction will contact you once you have been approved to bid. We do not provide buyer numbers until you have purchased a lot in the sale, and that number is only usable for that auction. After the sale contact the sale owner or manager to make arrangements for payment and delivery of your online purchases.

Please Note: High speed Internet access (DSL, T-1, or Broadband) is required to be able to bid successfully during the sale. If you have any questions, please contact DVAuction at (402) 316-5460 or (402) 474-5557 or email [support@dvauction.com](mailto:support@dvauction.com).

Proxy Bidding: If you can't access a computer during the sale, you can now place a "proxy bid" through DV Auction. Simply follow the instructions listed above, and as the sale date nears there will be a "Proxy Bidding" link under the sale listing on the main page of DV Auction. You can then place the maximum amount that you'd like to bid, and our system will represent your bid just as if you were there.

**Ty Groshans (970)818-6016**





First Place Carcass Contest  
Yuma County Cattleman's Association  
2013-2014 Feedlot Performance Contest



Reserve Champion Steer  
Yuma County Cattleman's Association  
2016-2017 Feedlot Performance Contest



First Place Carcass Contest  
Yuma County Cattleman's Association  
2018-2019 Feedlot Performance Contest



**Thanks for Coming!**



5151 County Rd. 34  
Yuma, CO 80759  
970/848-3759

FIRST CLASS MAIL  
TIME DATED MATERIAL



# CATTLEMEN'S CONNECTION ANGUS SALE



Lot 4  
WWR Fortress G4



Lot 32  
WWR Sure Fire G32

Tuesday, 1:00 p.m. (MDF)

# MARCH 10, 2020

At the Ranch, Yuma, CO